

# LANDSCAPING MAKEOVER APPROVED FOR CHARLESTOWN HILLCLIMB

by Judith Yarrow, MBCC Board Member at Large

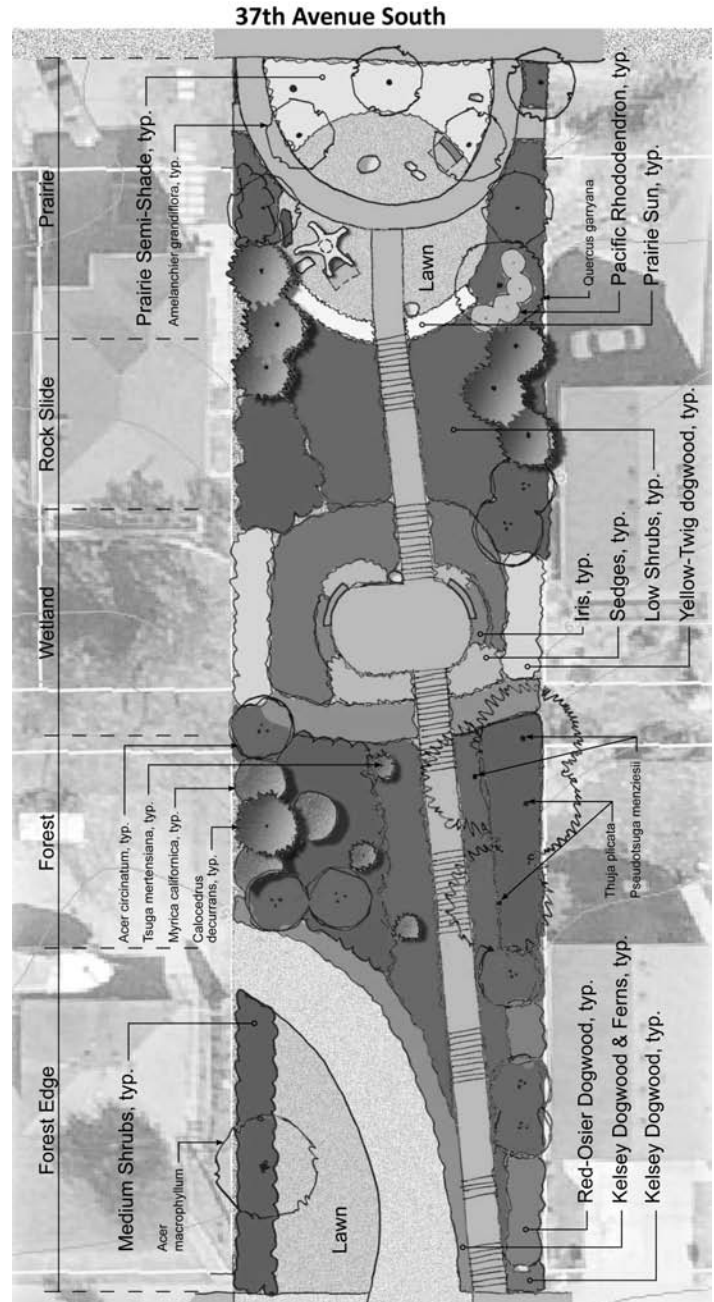
The Friends of Charlestown Hillclimb (FCH) are happy to announce that the design for landscaping the Charlestown Hillclimb has been approved by the Seattle Department of Transportation (SDOT).

The Charlestown Hillclimb is located between 37th Av. S and Courtland Pl. S on the S. Charlestown St. right-of-way, at the northeast corner of the Rainier Plaza. SDOT installed the first half of a stairway on the Hillclimb last summer and will complete the stairway in summer 2013. As part of the agreement to install the stairway, SDOT asked the community to clear and landscape the Hillclimb.

The local firm Johnson + Southerland created the landscape design with input from the community. Elements of the plan include reopening the view of the tree sculpture, planting drought-tolerant and native trees and shrubs, and creating a community gathering space on the hilltop. The budget for implementing the plan includes acquiring plants, irrigation hoses, and a temporary cistern; clearing the blackberries and removing the cottonwood trees; amending the soil, and mulching the cleared areas with wood chips. FCH expects to implement the design in phases over two years, with a lot of volunteer labor.

FCH is a volunteer group of neighbors who initiated and raised funds for the Hillclimb project and who sponsor monthly work parties (March through Oct.) to help maintain the Hillclimb. FCH plans to submit a Dept. of Neighborhoods matching grant request in spring 2013 for funds to help implement the landscape design. The group will also seek donations of plants, materials, and volunteer labor.

FCH invites your participation in the Hillclimb project. Your cash, in-kind, and labor donations are crucial for successful completion of this project. For more information about the Hillclimb see [charlestownhillclimb.org](http://charlestownhillclimb.org) or email [info@charlestownhillclimb.org](mailto:info@charlestownhillclimb.org) to be added to the email list.



Landscape design for the Charlestown Hillclimb.



**MARK POTVIN**  
 Broker – Principal  
 Direct 206.315.8650  
 Cell 206.890.4615  
[potvin@gbk.com](mailto:potvin@gbk.com)

**Gerrard Beattie & Knapp LLC**  
 1313 E. Pine, Seattle, WA 98122  
[www.gbk.com](http://www.gbk.com)  
 206.322.8940

## COME MEET OUR NEW\* NEIGHBOR

The LAKE & PARK SCHOOL hopes to add a classroom next to the clubhouse.

LEARN ABOUT THEIR PLANS (and meet your other neighbors)  
 At a MBCC MONTHLY COMMUNITY meeting  
 Monday, March 4 at 6:30 PM & Monday, April 8 at 6:30 PM  
 AT YOUR MOUNT BAKER COMMUNITY CLUB